

## FORD T-Mount HP Efficient Alternators

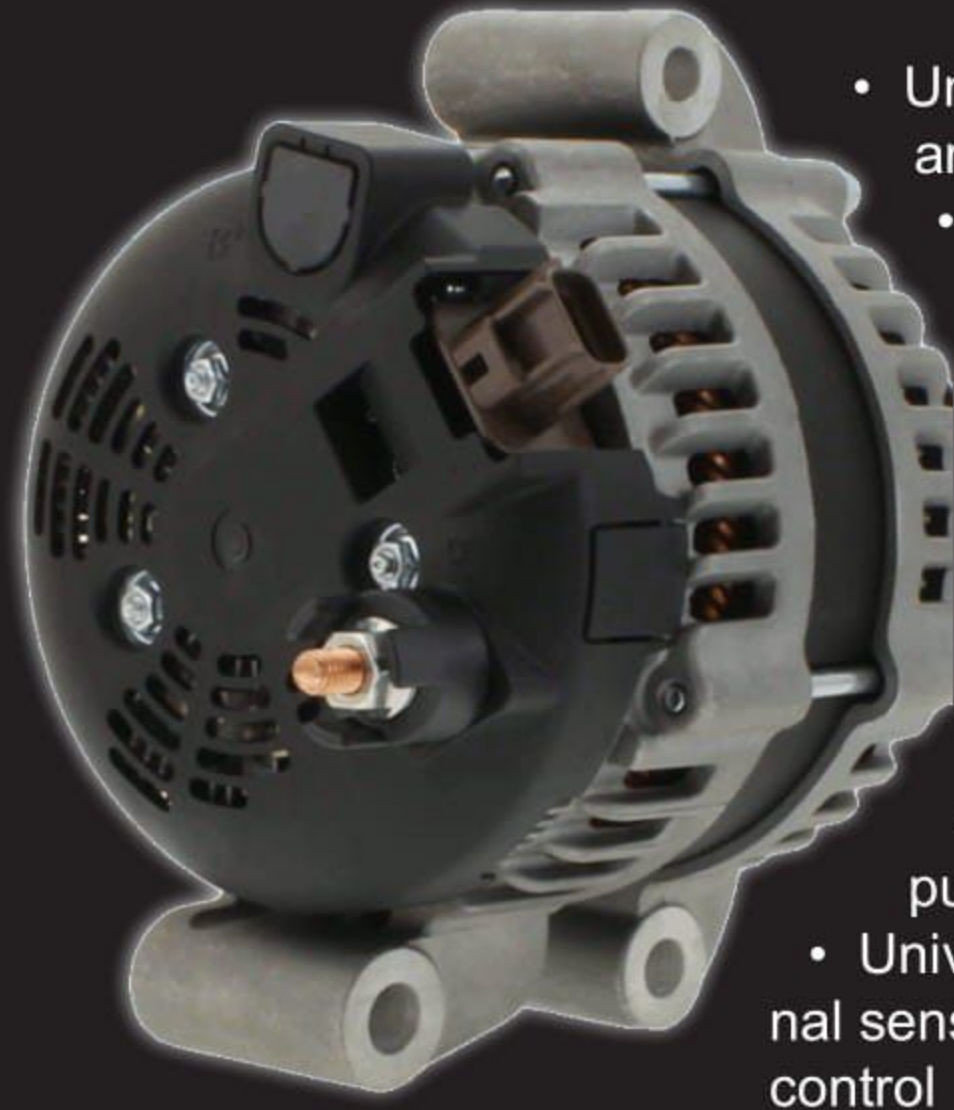
### Features:

**Fits FORD Chassis**

• **Efficient**

• **High Output**

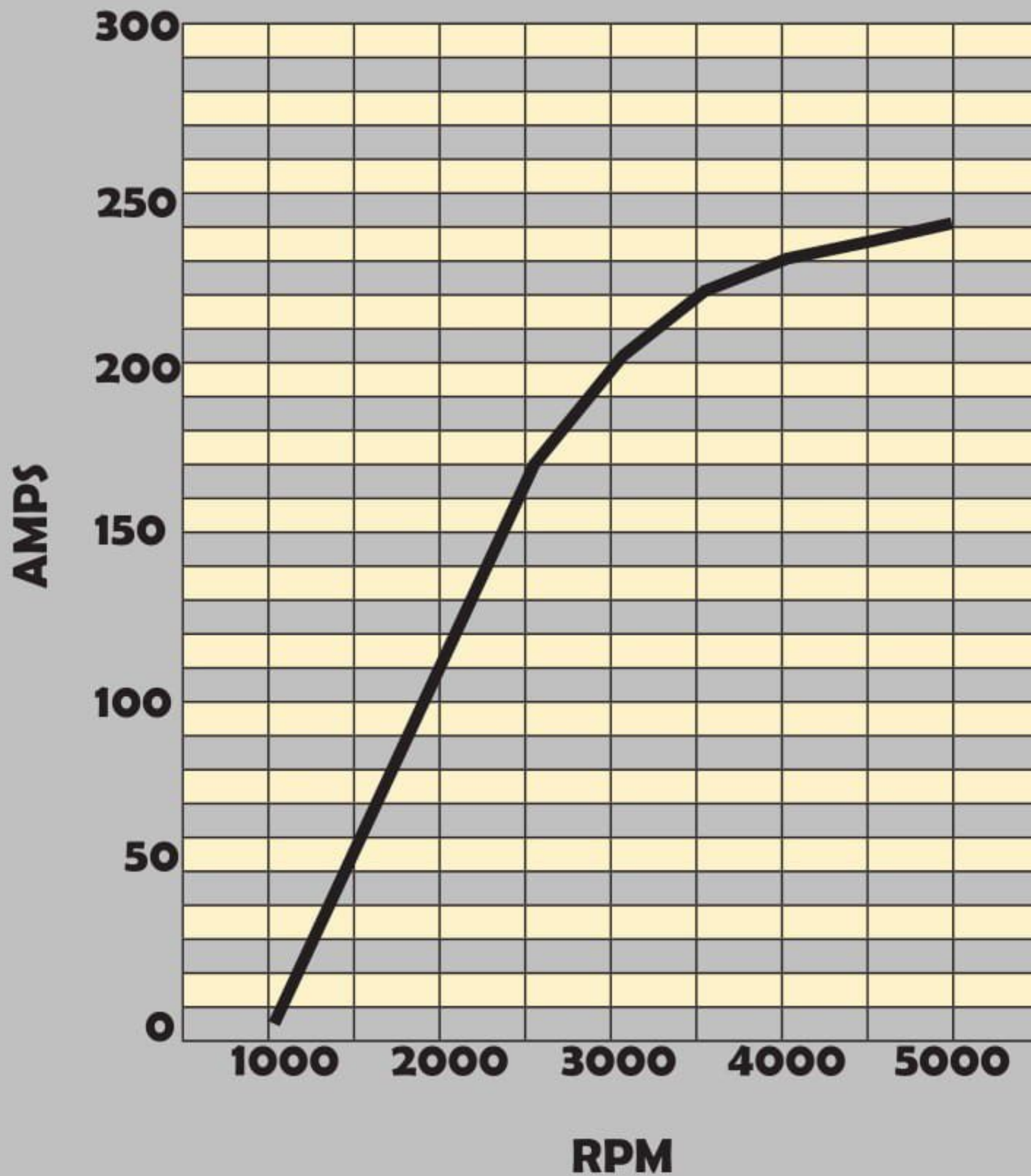
**12V - 240A**



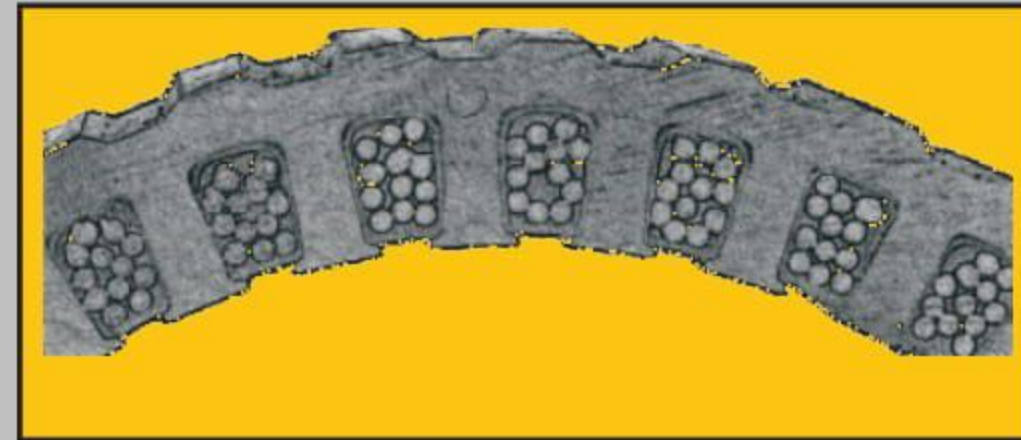
- Unmatched charging curve at idle - exceeding 170 amps
- Hair Pin, 6 phase stator maximizes slot fill
- OEM engineered to produce high output - this is not a "Pumped Up" auto unit
- 12 press fit 70A diodes with welded leads
- Unmatched heat recovery
- Super high heat bearings with 200+ degree seals and synthetic grease
- 96 slot stator compared to 36 slot provides superior efficiency
- Shaft design accepts passive, IDP, and OWC pulley designs
- Universal Regulator circuit adapts to internal or external sensing as well as PCM or ignition excitation with lamp control
- Unique rectifier design allows for 3 different output post positions

### Typical HP Series Output Curve

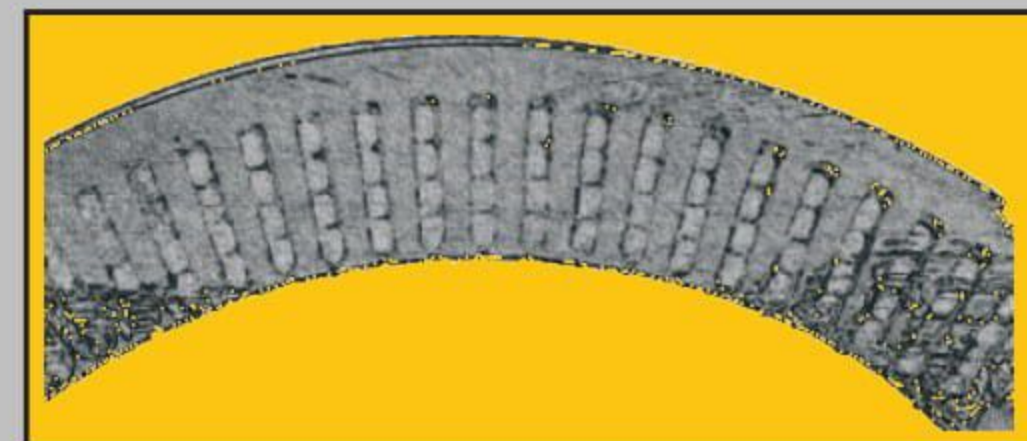
RPM	1000	2000	3000	4000	5000
AMPS	6	173	217	235	242



### See the Difference?

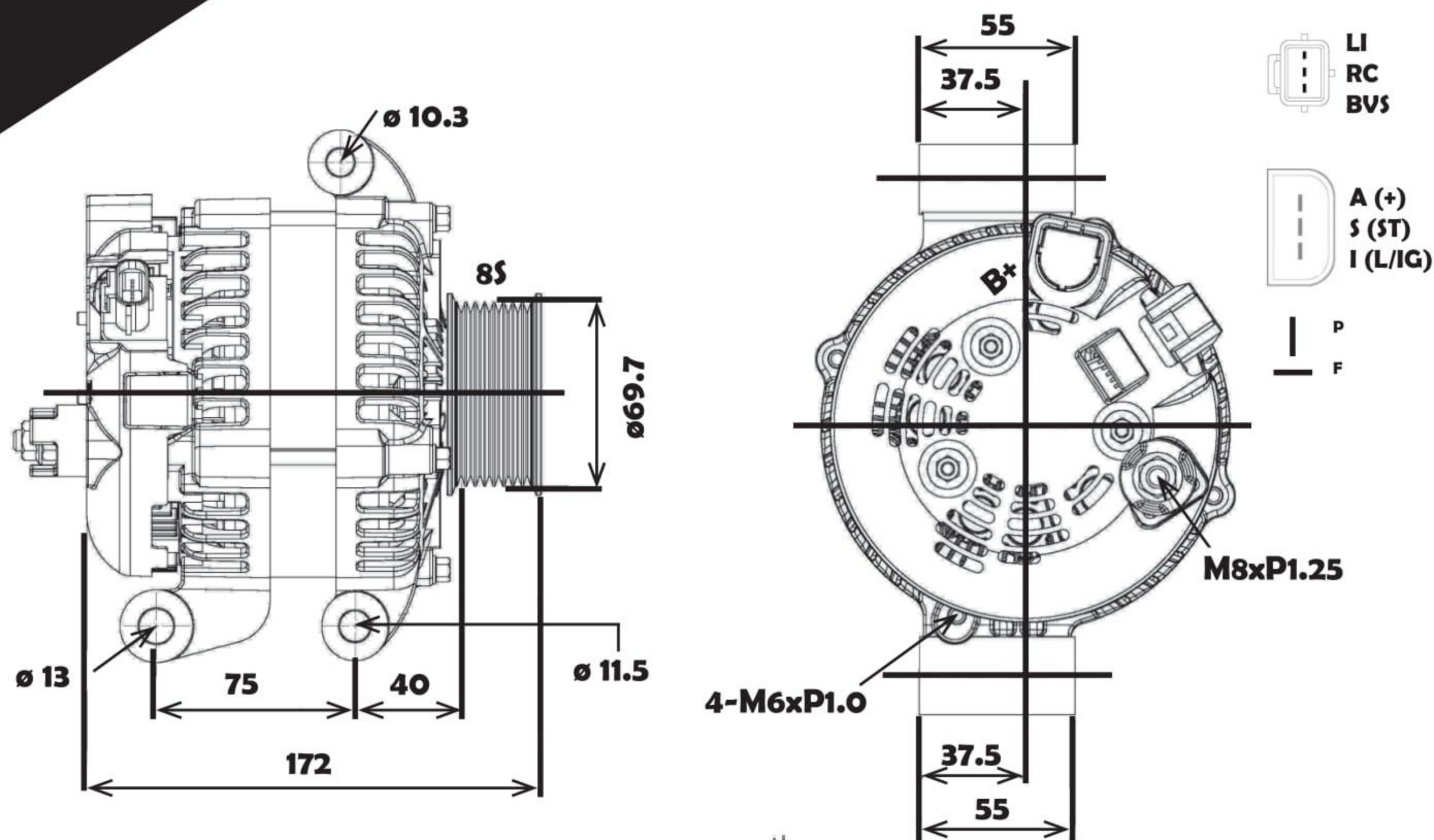


Round Wire Stator with Air Gaps Limiting the Slot Fill



Hair Pin Stator with Solid Copper Maximized the Slot Fill and Copper to Steel Coupling





**AVAILABLE OPTIONS**

**11290N**

8G SERPENTINE PULLEY, SQ PLUG

REPLACES: 104210-6100,02,03, 7C3T-1030-EE, 7C3Z-10346-EA, AMP6103

FITS: 2008-2010 F250/450 6.4L Diesel Engines

NOTE: Primary Unit in a Dual System

**8253ND-240A**

6G SERPENTINE PULLEY, SQ PLUG

REPLACES: XF2U-10300-BC,BD, BE

KARAM #:8253

FITS: 1999-2003 FORD Windstar 3.8L Engine

NOTE: Replaces 6G

**8307ND-240A**

6G SERPENTINE PULLEY, 50-132392S HARNESS

REPLACES: 3C3T-10300-BB, 3C3Z-10346-BA, 4C3T-10300-BB, 4C3Z-10346-BA, 6C2T-10300-DA, 6C2Z-10346-DA

KARAM #: 8307

FITS: 2003-2008 FORD F-SERIES SUPERDUTY 6.0L V8 Diesel Engines

NOTE: Primary Unit in a Dual System

**7750ND-240A**

6G SERPENTINE PULLEY, D PLUG

REPLACES: F07F-10300-AA, F07U-10300AA,AB,AC, F07U-10346AC,BD, F57U-10300AA,BA, AL598HO, AL598N, AL598X

KARAM #: 7750, 7792, 8258

FITS: 1992-1997 FORD/MAZDA Car/Lt Truck with 2.3L, 3.0L, 4.0L, 5.0L & 5.8L Engines

**7768ND-240A**

8G SERPENTINE PULLEY, D PLUG

REPLACES: F2PU-10346AF, F2TU-10300-AF, F3UU-10300-AF, F37U-10300-AA, F3UZ-10346-A, F5UU-10300-BA, F5UZ-10346-A, F6UU-10300-FA, F6UZ-10346-VA, F85U-10300-AB, F8AZ-10346-AB, XL3U-10300-CB

KARAM #: 7768, 7787, 7794, 8308, 12075

FITS: 1992-2004 FORD PICKUP, SUV, VAN 4.0L Engines and 7.3L Diesel Engines

**PX520TND-240A**

8G SERPENTINE PULLEY, EXTERNAL REGULATOR

REPLACES: PENNTEX PX-520TD, PX525TD

FITS: 1995-2004 FORD E-SERIES 7.3L Diesel Engines

NOTE: Externally Regulated